

iCE-BDC Kit User Manual

Notice for Use

Thank you for choosing Eleaf products! Please read this manual carefully before use so as to use correctly. If you require additional information or have questions about the product or its use, please consult your local agents, or visit our website at www.eleafworld.com.

Product Introduction

iCE Kit is featured by detachable, washable atomizer and manual battery. There are two-type atomizer and four-color battery for choice. It is pretty easy to use, just press the button and get a puff. With the 650mAh and 1000mAh lithium battery, you can enjoy a longer and more powerful puff without any care of second-hand smoke.

Standard configuration

- 1* iCE/iCE-BDC Atomizer
- 1* iCE Power Supply
- 1* iCE USB Cable Charger

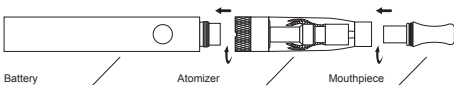
Quick Start

1. How to assemble:

Screw the atomizer into iCE battery. Then plug mouthpiece into the atomizer.

2. How to use:

Press the button and inhale the mouthpiece lightly, as it is equipped with manual battery.



iCE Atomizer

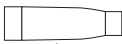
The iCE atomizer has a 1.6ml capacity. Due to its liquid and air separation structure, liquid will never be inhaled into the mouth, and it will never leak. The detachable, washable, and changeable heater in the atomizer enables carbon deposits on the filaments to be easily cleaned. It has a smooth air flow, no blockage, no burnt smell or taste. The tube is graduated (displays volume measurements with lines) to allow you to gauge how much you are vaping.



Atomizer Base



Atomizer Head



Transparent Tube



Mouthpiece

iCE-BDC Atomizer

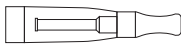
iCE-BDC atomizer adopts the essences of iCE atomizer, such as streamlined appearance, easy to refill and huge vapor. It is convenient to fill liquid, and can be filled 1.6ml one time. What's more, with the BDC atomizer head, it can ensure the large amount of vapor under low voltage, no burning taste under high voltage and no leakage.



Atomizer Base



BDC Atomizer Head



Atomizer Tube

iCE Power Supply

Length: 87mm

Weight: 32.0g

Color: black, silver, blue, red

Capacity: 650mAh and 1000mAh

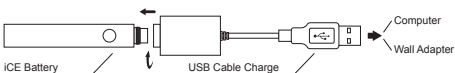
Properties of iCE battery

- High-safety, high-capacity, high-magnification and high-stability lithium battery.
- The battery adopts 3.3V constant voltage output, short circuit protection, over-charge and discharge protection, atomizer protection.

- On the top end of the battery, there are Eleaf branded logo silk-screen and CE marking laser.
- On the bottom of the battery, there are the branded laser and silk-screen, the significant symbols of Eleaf brand.

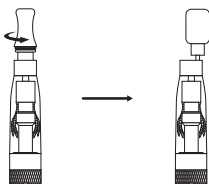
How to charge

Plug the battery into its dedicated USB charger, the connected place is on the top of the battery.

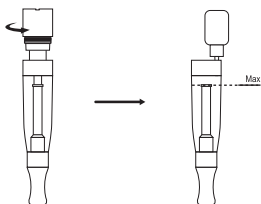


How to add liquid

iCE: Unscrew the iCE mouthpiece and add the liquid from the side of iCE body.



iCE-BDC: Unscrew the iCE-BDC tube from the base and refill the liquid from the bottom of iCE-BDC tube.



Please do not fill the cartridge too full, and it is better to leave a little space. When refilling the atomizer, do make sure that the liquid does not flow into the channel, otherwise it will be sucked into your mouth.

Attention:

- When the liquid is less than 10%, a slight burn taste may come out, hinting that you shall refill it.
- After using the mouthpiece for a period of time, there may some accumulation on the internal components caused by carbonization and impurities. So it is necessary to replace it periodically.

Precautions

1. Only have your iCE repaired by Eleaf. Do not attempt to repair the unit by yourself as damage or personal injury may occur.
2. Do not leave the iCE in high temperatures or damp conditions, otherwise it may be damaged. The appropriate operation temperature is within 0 °C to 45 °C while charging and -10 °C to 60 °C while using.
3. Do not attempt to combine the iCE with parts from other brands of e-cigarettes. If it is damaged in this way, our company will not take on responsibility and your warranty will be void.

Warranty

Please consult your Eleaf product warranty card. We are not responsible for any damages caused by human error. Our warranty is not available for products purchased from third-party vendors.

Email: info@ismoka.com
Web: www.eleafworld.com



MADE IN CHINA
Manufactured by iSmoka