

iJust 2 Atomizer User Manual

Notice for Use

Thank you for choosing Eleaf products! Please read this manual carefully before use so as to use correctly. If you require additional information or have questions about the product or its use, please consult your local agents, or visit our website at www.eleafworld.com.

Product Introduction

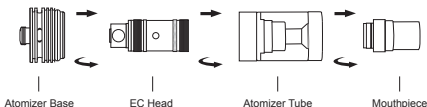
iJust 2 atomizer features 5.5ml huge liquid capacity despite its light weight. By adopting dual coil atomizer head, it can handle up to 80W and make large cloud production. The special structure design for iJust 2 atomizer standard base improves the heat dissipation capacity to a large extent.

Standard Configuration

- 1 x iJust 2 Mouthpiece
- 1 x iJust 2 Atomizer Tube
- 1 x EC Head (0.3ohm)
- 1 x iJust 2 Atomizer Standard Base
- 1 x iJust 2 Airflow Control Ring

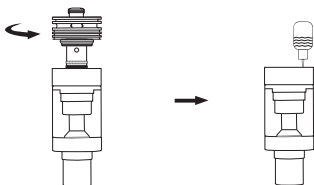
How to assemble

- 1.First mount EC Head onto the atomizer base;
- 2.Then put together base, tube and mouthpiece;
- 3.Finally assemble iJust 2 atomizer and power supply together.



How to add liquid

- 1.First unscrew the base off the atomizer;
- 2.Then slowly refill the liquid into the hole along the tube;
- 3.Finally screw the base onto the atomizer again. (Note: Please do not overfill)



How to adjust airflow

The amount of airflow can be adjusted by rotating the airflow control ring on iJust 2 atomizer standard base so as to get different vaping experiences.

Precautions

1. Only have your iJust 2 atomizer repaired by Eleaf. Do not attempt to repair the unit by yourself as damage or personal injury may occur.
2. Do not leave the iJust 2 atomizer in high temperatures or damp conditions, otherwise it may be damaged.
3. Do not attempt to combine the iJust 2 atomizer with parts from other brands of e-cigarettes. If it is damaged in this way, our company will not take on responsibility and your warranty will be void.

Warranty

We are not responsible for any damages caused by human error. Our warranty is not available for products purchased from third-party vendors.

Email: info@ismoka.com
Web: www.eleafworld.com



MADE IN CHINA

Manufactured by iSmoka