

iJust 2 TC Atomizer

User Manual

Notice for Use

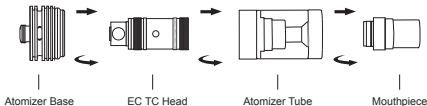
Thank you for choosing Eleaf products! Please read this manual carefully before use so as to use correctly. If you require additional information or have questions about the product or its use, please consult your local agents, or visit our website at www.eleafworld.com.

Product Introduction

The iJust 2 TC atomizer is a skillfully engineered TC version of iJust 2 atomizer, which is compatible with various temperature control batteries. It retains huge liquid capacity of 5.5ml. With EC TC head of pure cotton wick, the iJust 2 TC atomizer can be used within a wide range of wattage from 30W to 60W. The special structure of the atomizer standard base is designed for better heat dissipation.

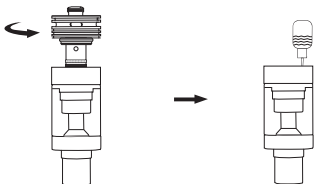
How to assemble

- 1.First mount the EC TC head onto the atomizer base;
- 2.Then put together atomizer base, atomizer tube and mouthpiece;
- 3.Finally assemble iJust 2 TC atomizer and temperature control battery together.



How to add liquid

- 1.First unscrew the atomizer base off the iJust 2 TC atomizer;
 - 2.Then slowly refill the liquid into the hole along the atomizer tube;
 - 3.Finally screw the atomizer base onto the iJust 2 TC atomizer again.
- (Note: Please don't add liquid into the air pipe and don't overfill.)



How to adjust airflow

Put the silicone airflow control ring on the atomizer base. Then the amount of airflow can be adjusted by rotating the silicone airflow control ring so as to get different vaping experience.

Precautions

1. Only have your iJust 2 TC atomizer repaired by Eleaf. Do not attempt to repair the unit by yourself as damage or personal injury may occur.
2. Do not leave the iJust 2 TC atomizer in high temperatures or damp conditions, otherwise it may be damaged. The appropriate operation temperature is within -10°C to 60°C while using.
3. Do not attempt to combine the iJust 2 TC atomizer with parts from other brands of e-cigarettes. If it is damaged in this way, our company will not take on responsibility and your warranty will be void.

Warranty

We are not responsible for any damages caused by human error. Legal warranty is applied.

Email: info@ismoka.com

Web: www.eleafworld.com



MADE IN CHINA

Manufactured by iSmoka