

MELO 2 Atomizer

User Manual

Notice for Use

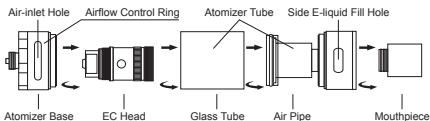
Thank you for choosing Eleaf products! Please read this manual carefully before use so as to use correctly. If you require additional information or have questions about the product or its use, please consult your local agents, or visit our website at www.eleafworld.com.

Product Introduction

With large liquid capacity of 4.5ml, the new MELO 2 atomizer is remarkably simple and convenient to use, mainly featuring the side e-liquid fill hole for ease of refilling e-liquid. When using with EC TC-Ni/EC TC-Ti head, the MELO 2 atomizer can be compatible with various temperature control devices.

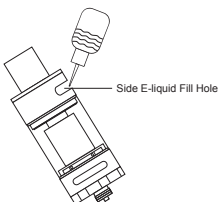
How to assemble

1. First screw the atomizer head onto the atomizer base tightly;
2. Next screw the atomizer tube onto the atomizer base tightly;
3. Then put the atomizer base and atomizer tube together with the mouthpiece;
4. Finally screw the MELO 2 atomizer onto battery.



How to add liquid

The e-liquid fill hole is located in the side of the top cap of atomizer tube. Rotate counterclockwise the regulation ring on the top cap to open the e-liquid fill hole. Then slowly refill e-liquid into the glass tube. Finally close the e-liquid fill hole by rotating clockwise the regulation ring.



Note: 1. Please first drip a few drops of e-liquid directly into the pure cotton wick in the atomizer head so as to make it fully soaked before vaping.

2. Please don't overfill and make sure the liquid level is between 10%-90%;
3. Please make sure the air-inlet holes on the atomizer base are closed before refilling e-juice.

How to adjust airflow

The amount of airflow can be adjusted by rotating the airflow control ring on the atomizer base so as to get different vaping experiences.

Precautions

1. Only have your MELO 2 atomizer repaired by Eleaf. Do not attempt to repair the unit by yourself as damage or personal injury may occur.
2. Do not leave the MELO 2 atomizer in high temperatures or damp conditions, otherwise it may be damaged. The appropriate operation temperature is from -10℃ to 60℃ while using.
3. Do not attempt to combine the MELO 2 atomizer with parts from other brands of e-cigarettes. If it is damaged in this way, our company will not take on responsibility and your warranty will be void.

Warranty

We are not responsible for any damages caused by human error. Legal warranty is applied.

Email: info@ismoka.com
Web: www.eleafworld.com



MADE IN CHINA

Manufactured by iSmoka